



**Hinckley Ladies
Netball Club**
Est. 1975
www.hinckleyladiesnetball.co.uk

In this Issue Page

| | |
|----------------------------|----|
| Words from our Chairperson | 1 |
| Juniors | 2 |
| Coaching Sessions | 2 |
| Mini Me | 3 |
| School Tournament | 3 |
| Juniors Party | 3 |
| HLNC Tour | 3 |
| Club Development | 4 |
| Umpires update | 4 |
| Clothing Bags | 5 |
| Carol's Bench | 5 |
| League Tables | 6 |
| Summer Netball | 7 |
| NETS Taster | 7 |
| Back2Netball | 7 |
| 40th Anniversary | 7 |
| Special Award | 8 |
| Quiz Night | 9 |
| Christmas Tournament | 9 |
| Christmas Meal | 9 |
| Freddie arrives | 9 |
| Snapshots | 10 |

Message from our Chairperson

It's fair to say that it's been a mixed bag of success and disappointment for all our teams over the first half of the season. The frustration of the Under 16s squad losing in their first match against Highway 12 goals to 14, to the jubilation of their first win against Coventry & North Warwickshire 13 goals to 7. Similarly the pain of a one goal loss against Copeswood for the D team paled in to insignificance as the C team counted the 50, 51, 52...**57** goals against LMR Rugby.

Despite all the up's and down's one thing is for sure we are all still loving our netball. Even the bitterly cold weather throughout December and January hasn't deterred numbers of crazy netballers from training on Wednesday and Thursday nights. And our club continues to go from strength to strength as we welcome a stream of new members and celebrate the return of some 'old' faces.

2015 marks our 40th Anniversary year and we plan to celebrate in style. The clubs presentation evening will be a mix of glamour, style and most importantly a celebration of success of our fellow club members. Tickets for the event, which will be held at Sketchley Grange, will be on sale at the beginning of March, in the meantime save the date in your diaries; Friday 26th June 2015. Everyone's welcome (partners, parents and friends) and let's make this a year to remember.

Whilst talking of celebrations we have some notable congratulations to go out to our club members on their own achievements within the sport; Zoe Stokes has passed her UA umpiring assessment, Rebecca Kenney has qualified as a C Award umpire and Shannon Davis has qualified as a UA Umpire. I am also personally delighted to confirm that I have achieved my Level 2 coaching qualification.

Recognising member's efforts

Our club is run as a voluntary organisation which means that everything our members experience; from the weekly coaching and match support, the officiating of training games, organised match play and umpires for matches, the availability of the court facilities, the efficiencies of the form filling and registrations for match play and club affiliation, the communications of club activities and the organisation of tournaments and social events, is made possible due to the efforts of a very committed and dedicated team of volunteers. Much of the organisation behind our combined netball experience is done away from the courts and out of sight of our members, everyone that plays a part in this work does so in their own spare time working tirelessly for the good of our club and its members. Very often their hard work goes unrecognised and so I would like to ask each and every one of you to remember those around you who go the extra mile to make your netball. Please take a moment to show your appreciation and respect for those members and extend a simple thank you every now and then.

If you would like to get involved in helping the club in any way (no matter how much or little time you have to spare) then please approach any one of the committee members, your help and support is warmly welcomed (You can remind yourself of our committee members by visiting our website:- www.hinckleyladiesnetball.com)

Claire Aspinall
Chairperson



Juniors

Senior Fixtures to End of the Season

10th January

Hinckley A v Leamington B (A)
 Hinckley B v Synergy C (H)
 Hinckley C v C&NW B (A)
 Hinckley D v Highway D (H)
 Hinckley E v Ambleside G (A)
 Hinckley F v Harbury B (H)

17th January

Hinckley A v Jaguar (A)
 Hinckley B v Keresley A (H)
 Hinckley C v Highway C (A)
 Hinckley D v Copsewood E (H)
 Hinckley F v Hinckley E

24th January

Hinckley A v Nuneaton Old Eds (H)
 Hinckley B v Bulkington D (A)
 Hinckley C v Highway C (H)
 Hinckley D v Keresley B (A)
 Hinckley E v Alvis C (H)
 Hinckley F v C&NW D (A)

7th February

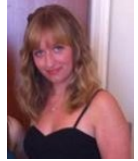
Hinckley A v Ernesford B (A)
 Hinckley B v C&NW A (H)
 Hinckley C v Whitnash (A)
 Hinckley D v Alec High (H)
 Hinckley E v C&NW D (A)
 Hinckley F v Godiva C (H)

28th February

Hinckley A v Stockton B (H)
 Hinckley B v Alvis A (A)
 Hinckley C v Griff & Coton B (H)
 Hinckley D v Offchurch B (A)
 Hinckley E v Bedworth (H)
 Hinckley F v Alvis C (A)

Our juniors are all progressing well, especially now that they are playing competitive matches and are turning into a well gelled team. Even though they have lost more matches than they have won, they have all remained positive and seem to thoroughly enjoy playing. New to the league this year, they are playing against teams that have been playing competitive netball for some time and are showing good improvement with every game. All results are available on our website. The junior teams have a handicapped tournament at the end of the season on 19th April which will be fun and good experience for all involved. There will be some summer netball for the juniors, please keep an eye on the website and your coaches will keep you informed.

Holly Hemsley
 Junior Representative



Session Coaching Plans

Please see below the coach's training session plan for March and April:-

| Date | Coach | Assistant | Session Plan |
|--------------------|------------|---------------|---------------------------|
| 4/3/15 | Karen | Shannon/Holly | Rules clarification |
| 11/3/15 | Karen | Holly/Shannon | Reactions & communication |
| 18/3/15 | Karen | Holly/Shannon | Reactions & communication |
| 25/3/15 | Claire | Gemma | Defensive Focus |
| ***** EASTER ***** | | | |
| 15/4/15 | Rebecca | Gemma | Sharp Shooting Focus |
| 22/4/15 | TOURNAMENT | | |
| 29/4/15 | | | |

Any questions you have regarding training please feel free to speak to Karen or any of the other coaches . Furthermore if you would like advice or feedback on your own personal play/performance do not hesitate in discussing this with your coaches they will be only too pleased to help.

Karen Malkin
 Coaching Manager



Hinckley Ladies
 Netball Club
 Est. 1975

New Mini Me join the club

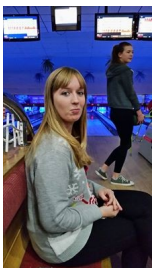
Sisters Mini Sadie and Mini Rachael, along with Mini CP, Mini Bex and Mini Jo (complete with grey hair) are newly initiated this year. Our Mini Me even made it into the East Midlands Netball Newsletter. Check out the HLNC Mini Me adventures facebook page for more mini me pictures.



Schools Invitational Tournament Volunteers Required

After the great success of last year's inaugural School's tournament, we shall be running it again this year on Sunday 10th May. Please try to keep this date free as we will need as many members as possible to help with the event on the day, including umpires, team co-ordinators, scorers, teas and other tasks. Please help if you can, this is a very important event for our club and a showcase for future talent, to be encouraged at our Club. For further information or to pledge your help, please contact Holly at juniors@hinckleyladiesnetball.com

Juniors Christmas Party



This Christmas our Juniors went bowling for their Christmas party in December along with their Coaches. This was followed by a meal at Frankie and Benny's. Everyone had a good time. The three lane winners were Amy Saunders, Emma Palmer and Coach Holly who tried very hard to conceal her competitive streak!

HLNC to tour again !

Due to the huge success of last year's tour to Skegness, this season will be taking two teams to Butlins at Minehead for the weekend of 3rd-5th July. It is a great chance for some competitive netball with fantastic social opportunities not only with your fellow club members but with the netball community as a whole. Approximate costs will be £120 per person. For further details please contact Rebecca Kenney by email at tournaments@hinckleyladiesnetball.com

Fixtures cont.

7th March

Hinckley A v Cov Sphinx A (A)
Hinckley B v Ambleside E (H)
Hinckley C v Alvis B (A)
Hinckley D v Sphinx B (H)
Hinckley E v Harbury B (A)
Hinckley F v Ambleside G (H)

14th March

Hinckley A v Godiva A (H)
Hinckley B v Jets (A)
Hinckley C v Ambleside F (H)
Hinckley D v C&NW C (A)
Hinckley E v Godiva C {H}
Hinckley F v Ernesford E (A)

21st March

Hinckley A v Bulkington C (H)
Hinckley B v Stockton C (A)
Hinckley C v Ernesford D (H)
Hinckley D v Henley E (A)
Hinckley E v Ernesford E (H)
Hinckley F v Griff & Coton C (A)

28th March

Hinckley A Griff & Coton A (A)
Hinckley B v Henley D (H)
Hinckley C v Leamington E (A)
Hinckley D v Stockton D (H)
Hinckley E v Griff C (A)
Hinckley F v Bedworth (H)

18th April

Hinckley A v Leamington B (H)
Hinckley B v Synergy C (A)
Hinckley C v C&NW B (H)
Hinckley D v HighwayD (A)
Hinckley E v Ambleside G (H)
Hinckley F v Harbury (A)

Junior Fixtures

11th January

U16s v Highway B

18th January

U14's v Henley A
U16s v Leamington C

25th January

U14s v Ambleside A

8th February

U14s v Ambleside B
U16s v Ambleside B

1st March

U14s v C&NW A

15th March

U16s v Arbury B

22nd March

U16s v C&NW B

19th April

Handicap Tournament

Club Development/CAPS

There has been lots going on in the world of club development over the past couple of months. We have attended courses, collated information and publicised lots of different courses and workshops that you can all attend. Our progress towards our Silver Award is now a whisker away from being ready for submission. The next assessment date is May 2015 when we will be submitting our folder of evidence. Hopefully this will result in us being awarded our Silver CAPS status, proving that we are being recognised as not only a well run club, but a club that is developing and growing with the best interests of its members at its heart.

Holly Hemsley (Safeguarding Officer) has recently been on a safeguarding course called Time to Listen. This course is a top up course for Safeguarding Officers to help them understand the ins and outs of their role, how EN is there to support us, how to develop best practice and how to encourage our younger members to be involved in the club. It was a very worthwhile course to have attended and as with any workshop has highlighted some areas where we need to do some more work and make sure that our processes and procedures are clear and well publicised within the club.

Karen Malkin is set to go on an England Netball technical coaching workshop in the very near future. The workshop, Sharp Shooting, is a dedicated shooting workshop to help our wonderful shooters get even better. You will see the outcomes of this workshop start to filter into training in the very near future.

As ever there is a large amount of paperwork that this kind of process requires. There are a number of pieces of evidence that I still require so I may come knocking asking for any certificates or plans that I need to finish off our submission of evidence.

As a club that is committed to its members and their development we are always looking to help out our people to attend courses and workshops that will enable the club to grow. So if there is anyone who would like to join the coaching team, add to your knowledge of the game and become an umpire then please let me or any of the committee know. It doesn't matter whether you are a senior or a junior member, you are more than welcome to put your hand in the air and say "yes, I'd like to coach or umpire". An email was sent out recently regarding the "Pass on you Passion" program, this is a great opportunity for our junior members to get more involved in the coaching and umpiring of our game and gain valuable experience and recognition for the time and effort they contribute. As ever, I will endeavour to ensure that all opportunities available are publicised for you all.

We have a wealth of talent within our club and I want to make sure you are all given the opportunity to grow as players, umpires and coaches to continue to make HLNC a fabulous club to be a part of.

Laura Benz

Development Officer



We're on the Web!

www.hinckleyladiesnetball.co.uk



Hinckley Ladies
Netball Club
Est. 1975

Umpire Update

Congratulations Zoe Stokes on passing your UA Award and to Becky Kenney who has just qualified as a C Award umpire. Good luck to Holly Hemsley and Leanne Evans who have been on the UA course and now need to complete there practice hours before taking their tests.

Emma's Clothing Bag Collection

Thanks once again to Emma Draycott for collecting our unwanted clothing and storing it in her bedroom. Matt must be relieved to get his house back. The bags have now been collected and we raised £136, a very good sum considering they had dropped their price from 60p to 40p a kilo. Great job Emma!



Dates for your Diary

5th March

NETS Launch

29th March

Weeding Party

19th April

Juniors Handicap Tournament

25th/26th April

Seniors Handicap Tournament

10th May

School's Invitational Tournament

27th May

Club AGM

10th, 24th June & 1st July

Trials for 2015/16 season

13th June

CWNA Presentation

20th June

Beth's Mixed Tournament

26th June

40th Anniversary Celebrations for HLNC at Sketchley Grange

3rd-6th July

Netball Tour (seniors)

22nd July

HLNC Forum

Weeding Party

We all need to help out with the maintenance of our new courts. One of the priority jobs is to clear the weeds in the immediate area around the outside of the courts to prevent them from spreading onto the courts and reduce the amount of seeds from being carried on there. We shall be holding a weeding party on 29th March with the expectation that as many people as possible will come along to help out and make it an easier and quicker job. Refreshments will be provided as a reward for your efforts.



Don't forget to visit our website!

www.hinckleyladiesnetball.com

Check out all the latest fixtures, results, news and notices. If you want to share or promote anything at all on there, please send details to Kate at

website@hinckleyladiesnetball.com

Engagement

You'll be delighted to know that Michelle (Shellbell) Botting got engaged at Christmas after a romantic proposal from Dave on the beach in Oz on Christmas Day! Congratulations both of you. Australia is obviously suiting you two. We all send our very best wishes.

Carol's Bench

For those that donated to Carol Whitaker's collection in lieu of flowers at her funeral. You may remember her memorial fund was split between Salisbury Hospital Spinal Unit, Hampshire Air Ambulance and Horatio's Garden. You may not have seen the picture of the beautiful bench which you helped to purchase in Carol's memory for Horatio's Garden. Hopefully we will soon be having our own bench in her memory too to go on the sidelines.



Hinckley Ladies
Netball Club
Est. 1975

| Division 2 | Played | Won | Drawn | Loss | Goals Scored | Goals Against | Goals +/- | Points |
|-------------------|-----------|----------|----------|----------|--------------|---------------|-----------|-----------|
| Godiva A | 10 | 8 | 1 | 1 | 368 | 271 | 97 | 45 |
| Griff & Coton A | 10 | 7 | 0 | 3 | 325 | 256 | 69 | 39 |
| Nuneaton Old Eds | 10 | 6 | 0 | 4 | 297 | 289 | 8 | 36 |
| Coventry Sphinx A | 10 | 5 | 1 | 4 | 314 | 288 | 26 | 34 |
| Leamington B | 10 | 5 | 1 | 4 | 339 | 364 | -25 | 33 |
| Hinckley A | 10 | 5 | 0 | 5 | 353 | 335 | 18 | 32 |
| Bulkington C | 9 | 3 | 1 | 5 | 304 | 323 | -19 | 24 |
| Stockton B | 9 | 3 | 0 | 6 | 308 | 340 | -32 | 24 |
| Jaguar | 9 | 3 | 0 | 6 | 306 | 380 | -74 | 20 |
| Ernesford B | 9 | 1 | 0 | 8 | 294 | 362 | -68 | 14 |

| Division 4 | Played | Won | Drawn | Loss | Goals Scored | Goals Against | Goals +/- | Points |
|-------------------|-----------|----------|----------|----------|--------------|---------------|------------|-----------|
| Jets | 9 | 9 | 0 | 0 | 397 | 247 | 150 | 45 |
| C&NW A | 9 | 7 | 0 | 2 | 343 | 275 | 68 | 37 |
| Bulkington D | 9 | 6 | 0 | 3 | 261 | 256 | 5 | 35 |
| Keresley A | 10 | 5 | 0 | 5 | 332 | 256 | 76 | 34 |
| Henley D | 10 | 5 | 0 | 5 | 329 | 362 | -33 | 31 |
| Stockton C | 10 | 4 | 1 | 5 | 333 | 367 | -34 | 29 |
| Alvis A | 9 | 4 | 0 | 5 | 317 | 323 | -6 | 27 |
| Ambleside E | 10 | 4 | 0 | 6 | 315 | 352 | -37 | 25 |
| Synergy C | 10 | 3 | 0 | 7 | 286 | 378 | -92 | 20 |
| Hinckley B | 10 | 0 | 1 | 9 | 267 | 364 | -97 | 14 |

| Division 5 | Played | Won | Drawn | Loss | Goals Scored | Goals Against | Goals +/- | Points |
|-------------------|----------|----------|----------|----------|--------------|---------------|-----------|-----------|
| Whitnash | 10 | 9 | 0 | 1 | 406 | 309 | 97 | 46 |
| Ambleside F | 10 | 8 | 0 | 2 | 432 | 351 | 81 | 43 |
| Alvis B | 10 | 7 | 0 | 3 | 463 | 364 | 99 | 39 |
| Highway C | 10 | 5 | 0 | 5 | 418 | 392 | 26 | 32 |
| C&NW B | 10 | 5 | 0 | 5 | 311 | 319 | -8 | 30 |
| Hinckley C | 9 | 4 | 0 | 5 | 314 | 295 | 19 | 29 |
| Leamington E | 10 | 4 | 0 | 6 | 344 | 368 | -24 | 28 |
| Griff & Coton B | 10 | 3 | 0 | 7 | 328 | 359 | -31 | 22 |
| LMR Rugby C | 9 | 2 | 0 | 7 | 283 | 397 | -114 | 17 |
| Ernesford D | 10 | 2 | 0 | 8 | 308 | 453 | -145 | 16 |

| Division 6 | Played | Won | Drawn | Loss | Goals Scored | Goals Against | Goals +/- | Points |
|-------------------|-----------|----------|----------|----------|--------------|---------------|-----------|-----------|
| Henley E | 8 | 8 | 0 | 0 | 293 | 182 | 111 | 40 |
| Coventry Sphinx B | 10 | 7 | 1 | 2 | 342 | 269 | 73 | 40 |
| C&NW C | 10 | 6 | 0 | 4 | 279 | 249 | 30 | 35 |
| Keresley B | 9 | 6 | 0 | 3 | 301 | 246 | 55 | 34 |
| Offchurch B | 10 | 5 | 1 | 4 | 292 | 295 | -3 | 33 |
| Hinckley D | 10 | 3 | 1 | 6 | 296 | 270 | 26 | 26 |
| Stockton D | 9 | 4 | 0 | 5 | 242 | 276 | -34 | 23 |
| Copsewood E | 10 | 3 | 0 | 7 | 270 | 314 | -44 | 23 |
| Alec High | 9 | 1 | 2 | 6 | 222 | 321 | -99 | 15 |
| Highway D | 9 | 1 | 1 | 7 | 209 | 324 | -115 | 14 |

| Division 7 | Played | Won | Drawn | Loss | Goals Scored | Goals Against | Goals +/- | Points |
|-------------------|-----------|----------|----------|----------|--------------|---------------|-------------|-----------|
| Ernesford E | 10 | 8 | 0 | 2 | 437 | 300 | 137 | 42 |
| Harbury B | 9 | 7 | 0 | 2 | 325 | 248 | 77 | 38 |
| C&NW D | 9 | 7 | 0 | 2 | 248 | 180 | 68 | 38 |
| Ambleside G | 10 | 6 | 0 | 4 | 327 | 250 | 77 | 35 |
| Hinckley E | 10 | 6 | 0 | 4 | 353 | 313 | 40 | 33 |
| Godiva C | 10 | 4 | 0 | 6 | 288 | 264 | 24 | 27 |
| Griff & Coton C | 9 | 4 | 0 | 5 | 273 | 265 | 8 | 25 |
| Alvis C | 9 | 4 | 0 | 5 | 269 | 262 | 7 | 25 |
| Bedworth | 8 | 0 | 0 | 8 | 144 | 353 | -209 | 3 |
| Hinckley F | 8 | 0 | 0 | 8 | 123 | 352 | -229 | 0 |

**How our teams
stand half way
through the season
To
12th January**

| Juniors Under 14's | Played | Won | Drawn | Loss | Goals Scored | Goals Against | Goals +/- | Points |
|----------------------|----------|----------|----------|----------|--------------|---------------|-------------|----------|
| Leamington U14A | 8 | 8 | 0 | 0 | 303 | 52 | 251 | 40 |
| Ambleside U14A | 6 | 6 | 0 | 0 | 200 | 67 | 133 | 30 |
| Henley U14A*** | 7 | 5 | 0 | 2 | 201 | 109 | 92 | 26 |
| LMR U14A | 7 | 4 | 0 | 3 | 174 | 141 | 33 | 22 |
| Harbury U14A | 7 | 4 | 0 | 3 | 187 | 170 | 17 | 22 |
| Copsewood U14A | 6 | 3 | 0 | 3 | 146 | 136 | 10 | 17 |
| Synergy U14A | 6 | 2 | 0 | 4 | 107 | 149 | -42 | 12 |
| Highway U14A | 5 | 1 | 0 | 4 | 54 | 163 | -109 | 7 |
| Ambleside U14B*** | 6 | 0 | 0 | 6 | 82 | 131 | -49 | 5 |
| Hinckley U14A | 8 | 0 | 0 | 8 | 40 | 376 | -336 | 2 |
| Cov and N Warks U14A | 0 | 0 | 0 | 0 | | | | 0 |

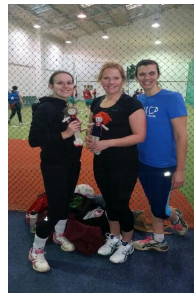
| Juniors Under 16's | Played | Won | Drawn | Loss | Goals Scored | Goals Against | Goals +/- | Points |
|--------------------|----------|----------|----------|----------|--------------|---------------|-------------|----------|
| Ambleside B | 8 | 8 | 0 | 0 | 334 | 105 | 229 | 40 |
| Leamington C | 7 | 5 | 1 | 1 | 227 | 130 | 97 | 28 |
| Cov and N Warks B | 8 | 4 | 0 | 4 | 146 | 164 | -18 | 23 |
| Copsewood | 7 | 3 | 1 | 3 | 161 | 139 | 22 | 21 |
| Harbury B | 7 | 2 | 0 | 5 | 130 | 220 | -90 | 11 |
| Highway B | 6 | 1 | 0 | 5 | 61 | 172 | -111 | 7 |
| Hinckley*** | 7 | 1 | 0 | 6 | 77 | 206 | -129 | 7 |

Summer Netball

We will once again be organising a Summer League at our courts, in fact there will be two. There will be a Monday night league for our F team players, Hornets and 'Back 2 Netballers'. Then on Tuesday evenings we will be organising a league for our A-F team members. These leagues are open to all who want to play and are a lot less formal and rigid than our Winter league games with a mix of players from different teams. Monday nights are for less experienced players to give them more game play and match experience. Please see detailed dates on the right. Keep your eyes on our Website for full details nearer the time.

NETS Taster Session

On 18th January Gemma, Emma, Kate and Leanne all went along to an England Netball run session for indoor 6-a-side netball where you play on a court split into two halves surrounded by high tension nets that you play the ball off. There are two defenders, two link players and two attackers. It is fast and furious. They went out and won all of their matches and were overall tournament winners. A fantastic introduction to NETS ladies, well done! There will be another NETS taster session at Willow Sports Centre, Derby on 5th March, 6.30pm. If you're interested please contact Gemma Braga.



Back 2 Netball

Gemma will once again be running 'Back 2 Netball' sessions for ladies that haven't played netball for a while, maybe since school. Showing them that netball can be fun and a good way to keep fit and healthy and make new friends. These sessions will be taking place in April/May on Monday evenings. Please see dates on the right. Gemma will be emailing ladies that have already contacted her in March.

For further information please contact Gemma by email at secretary@hinckleyladiesnetball.com

40th Anniversary Celebrations



With the season end only two months away the Committee's thoughts have turned to the presentation evening, and this year we have got an excuse to really party as our club celebrates its 40th anniversary year. This year's stylish event is, as usual, open to all members current and past, their partners, friends and family. The celebration evening will be held this year at Sketchley Grange on Friday 26th June. Tickets are priced at £23.00 (under 18s) and £25.00 (over 18s), a family ticket will also be available at a special rate of £90.00 (for 2 adults and 2 children from the same family). Ticket price includes; pre-dinner drink, 3-course meal and disco. The evening will commence at 7:00pm for pre-dinner drinks with carriages at midnight. The theme for the evening is 'black and red' and the dress code is black tie. Tickets will be on sale in March. We hope you can all join in the celebrations.

40

40

Summer League Dates

Mondays :-*

1st June
9th June
15th June
22nd June
29th June
6th July

*Tuesdays** :-*

2nd June
10th June
16th June
23rd June
30th June
7th July

** Mondays for Teams F,H,B2N*

*** Tuesdays for Teams A-F*

Back 2 Netball Dates

13th April
20th April
27th April
4th May
11th May
18th May



Hinckley Ladies
Netball Club
Est. 1975

Committee email addresses

@hinckleyladiesnetball.com

Chairperson– Claire Aspinall
chair@hinckleyladiesnetball.com

Vice Chair– Jessica Burke
vicechair@.....

Coaching Manager– Karen Malkin
coaching@.....

Communications Officer– Jo Oakes
communications@.....

Development Officer– Laura Benz
development@.....

Events Officer– Shannon Davis
events@.....

Facilities Officer– Leanne Evans
facilities@.....

Fixtures Secretary– Carole Payne
fixtures@.....

Grants Secretary- Emma Draycott
grants@.....

Juniors/safeguarding Officer– Holly Hemsley
juniors@.....
safeguarding@.....

Performance Manager– Rebecca Mayfield
performance@....

Secretary & Membership– Gemma Braga
secretary@.....

Tournaments Secretary– Rebecca Kenney
tournaments@....

Treasurer– Gail Lavery
treasurer@....

Umpiring Secretary– Carole Payne
umpiring@....

Web Development-Anna Kinsella
webmaster@....

Website Manager– Kate Chamberlain
website@....

Special award for Carol Whitaker

Late 2014, Hinckley Ladies Netball Club entered two submissions for the Hinckley and Bosworth Sports Awards. This awards scheme, run by the Hinckley and Bosworth Local Sports and Health Alliance, honours not only the achievements of individuals and teams but also the contribution made by the volunteers who help to run many of the clubs.

The categories that we entered were 'Club of the Year' and 'Lifetime Achievement', for which we nominated Carol Whitaker.

We were extremely proud when Carol was awarded the Lifetime Achievement accolade, and that the club were runner-ups in the Club of the Year category. Our submissions for these awards were certainly warranted and they really do boast what a fantastic and committed club we are.

Carol was a true inspiration to sport in the borough, celebrating over 35 years of dedication and commitment to Hinckley Ladies Netball Club, Carol not only continued to play netball during this time but also volunteered in many roles to support the development of sportswomen of all ages. As a qualified umpire and accredited Level 2 coach, Carol provided guidance and support for club members and players across the region, significantly and positively impacting on their development and skills.

Carol also continued to push her own playing abilities to the limit in order to consistently support her fellow team members in gaining promotions in competitive leagues. But it is the everlasting legacy of the clubs Junior section that Carol is wholly responsible for and will be remembered for. Carol not only established the junior section but continued to develop the skills and abilities of girls aged 11-18 as a voluntary coach for the club. Passionate about youth sport Carol also took netball out to the community, supporting local schools as a coach. Carol was not only responsible for developing club members in to professional regional and county netball players but importantly for inspiring many young girls to lead active and healthy lifestyles.



Despite her length of service to the club and the sport of Netball, Carol self professed that she had many years left in her of coaching, umpiring and playing. Sadly Carol was involved in a tragic accident in 2013 leaving her paralysed from the chest down, however, despite this Carol continued to support the club and the teams from the sideline encouraging positive improvement in players through coaching guidance. Due to

complications resulting from her paralysis Carol sadly lost her life last year. The time, dedication and commitment Carol put in to sport in the community has meant that Hinckley has been left with a huge sporting legacy, and Hinckley Ladies Netball Club continues with its Junior section in memory of and in gratitude to Carol Whitaker, a very special lady.



Hinckley Ladies
Netball Club
Est. 1975

Quiz Night/Website Launch

To mark the start of the season we had a social evening at the Rugby Club organized by Shannon and Karen Malkin. We began the evening with a fish and chip (or sausage) supper, enjoyed by all. We then moved on to the main event, a brilliant Karen Malkin quiz which was won by Gail Lavery's team 'Three fish and a sausage.' Well done team, it wasn't easy. This evening also saw the launch of our new Website., which is a great improvement on our original with so many extra features and tools. Thanks to all those involved in it's creation but a special thank you to Simon Askham and Anna for all of their time and hard work they put into this project. It is fantastic. We have had over 4500 hits with 246 from Brazil and many more from all over the world including Russia, China and Mexico!

You can check out our website at www.hinckleyladiesnetball.com



Christmas Interclub Tournament

The last training session before Christmas saw our teams taking part in an interclub tournament, arranged by our performance manager Rebecca Mayfield. Points were awarded not just for winning but also for showing the use of skills taught during our previous training sessions. The result was a draw between the A's and the E's though the A's handed the winners title to the E's as they felt they had showed so much improvement and used their new knowledge to full advantage. Congratulations to the E Team.



Christmas Meal

Back in December we had the traditional Christmas Meal. This was at The Milestone in Hinckley. There were 32 of us there including a couple of girls who had left the club last year to go off to University, it was so good to see you Alex Oliver and Emily Davis. We had one of Karen Malkin's legendary Christmas quiz's and it was another good evening.

Freddie has arrived!



Wonderful news this month from the Mayfield household. Rebecca gave birth to eagerly awaited Freddie Austin Mayfield on 17th February weighing in at a very healthy 9lbs 10oz. Congratulations Rebecca and Sam, we all send our very best wishes and look forward to meeting him soon!



Did you know that your membership at Hinckley Ladies includes an associate membership to Hinckley Rugby Club. This means that you can hire the clubhouse free of charge providing the event will cover the bar staff and running costs. Please note though they do not accommodate 13th-21st Birthday parties. If you want to hire the room please speak to **Dom on 07974 948093**

Details of the facility can be found on the HRFC website www.pitchero.com/clubs/hinckley

Keep up to date with the League tables on the C & WNA website www.coventrynetball.org.uk

Other websites of interest:

England Netball www.englandnetball.co.uk

East Midlands Netball www.eastmidlandsnetball.co.uk

Hinckley Rugby Club www.pitchero.com/clubs/hinckley



Hinckley Ladies
Netball Club
Est. 1975

Snapshots from the season so far !



A very studious Mini Kate



Sparklers for Bonfire Night training



Mini Me at NETS



Windsor Tiffin social



Double trouble!



Watching England at Worcester



Quiz night



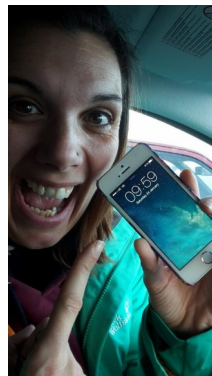
Its raining again!



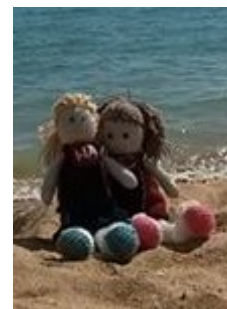
Our new website launch



Kaz Green makes frost Angels



Yes, Emma was early !!!!!



Mini Anna & Mini Leanne in Portugal



Minis checking their raffle tickets

Gail doesn't seem at all sure about this netball malarkey??

